

**Ealing, Hammersmith
& West London College**



**IT ALL
STARTS
HERE**

STUDENT SUCCESS ■ OPEN EVENINGS ■ HOW TO APPLY

IT ALL STARTS HERE

Over 700 A Level and BTEC National Diploma students chose to study with us in 2010, many of them looking for a unique experience for the next stage in their learning journey.

Our Sixth Form Centres are welcoming more young people than ever. They tell us that the more mature environment, friendly teachers and great facilities, are what inspire them to work hard to reach their goals.

Our College provides many opportunities with brilliant pass rates every year, a wide range of extra curricular activities and all the support you need to succeed.

If you would like to take your next step with us, contact us today!



Elmi Southall Campus
A Levels: Physics (B), Biology (A)
& Chemistry (B)

A Levels **95%**

A Levels

Subject	Pass Rate (A*-E)	Pass rate (A*-C)
Accounting	93%	49%
Art & Design	100%	73%
Biology	88%	75%
Business Studies	99%	58%
Chemistry	91%	75%
Economics	94%	64%
English Language	100%	71%
English Literature	97%	59%
French	100%	100%
Government & Politics	94%	67%
History	100%	90%
ICT	97%	48%
Law	89%	61%
Maths	97%	74%
Media Studies	100%	63%
Physics	97%	50%
Psychology	90%	44%
Sociology	96%	83%
Spanish	100%	91%
Overall pass rate	95%	68%

“ My course has challenged me in many ways and I have overcome obstacles to achieve my goals. Staying focused was the key to my success! ”

Student Success 2010

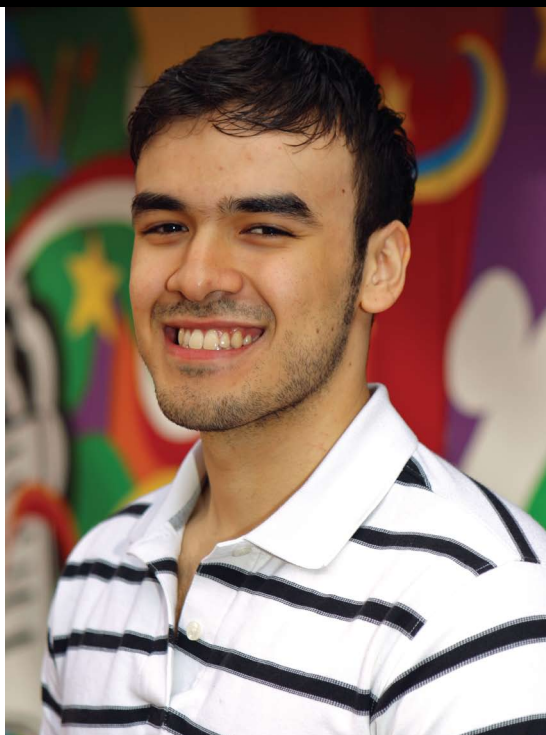
BTEC
National
Diplomas **97%**

“ I love sport so my course really suited me. I will study for a degree in Sport Science and ultimately hope to own my own business as a personal trainer. ”

Jack, Hammersmith Campus
BTEC National Diploma: Triple Distinction (DDD)

BTEC National Diplomas

Subject	Pass Rate%	% High Grades
Applied Science	100%	70%
Art & Design	100%	74%
Business & Finance	96%	87%
Electrical & Electronic Engineering	100%	50%
Health Studies	96%	87%
ICT Practitioners	92%	68%
Media Production	100%	73%
Music	93%	86%
Music Technology	100%	88%
Performing Arts	100%	72%
Public services (Uniformed)	100%	54%
Sports Studies	100%	35%
Overall pass rate	97%	72%



Florence Hammersmith Campus
A Levels: Sociology (A*), English (B),
AS Psychology (B) & Law (B)

“ I’ve just accepted my place at Liverpool University to study Criminology and Psychology, so I’m really excited! ”

What makes studying with us so great?


- Practical courses that bring learning to life
- A strong focus on independent study
- Lots of support – including your own personal tutor
- Industry standard kitchens, studios, theatres, salons and workshops
- A student portal – 24 hour online access to your own learning world
- Quiet, convenient student common rooms – everyone is welcome!
- 21st century fitness facilities
- You get more than a qualification at Ealing, Hammersmith & West London College


What do I do next?


So you want to apply? Before you do, speak to our College Information Centre advisers. They will offer you lots of information and advice to help you make the right decision. They will also ensure that any advice is tailored to meet your individual needs. Call them today and take the first step towards your future.


How to apply

Apply for a course for September 2011 by:

 wlc.ac.uk - apply online or download an application form from our website

 cic@wlc.ac.uk - send us your application form via email

 0800 980 2175 - call us and request an application form by post

 Drop in to one of our College Information Centres and complete an application form.

Contact us today to discuss your options.

0800 980 2175 or cic@wlc.ac.uk

Ealing, Hammersmith & West London College

Support & Safety on Campus

Personal Tutors

A personal tutor will help you settle into college life, set and achieve key objectives and targets as well as monitor your attendance.

Careers

Our careers advisers offer free and impartial information, advice and guidance on everything you need to know about careers.

Counselling & Advice

We have qualified counsellors and welfare advisers specialise in supporting you with practical welfare advice and one-to-one counselling.

Safeguarding Officers

We want your experience to be a safe and inspiring one. Our team of safeguarding officers are based at each campus - you can talk to them at any time if you need to speak in confidence.

Student Funds

Our advisers offer advice and support on money matters and funds available to you as a student. These include the Education Maintenance Allowance (EMA), Adult Learner Grant (ALG), Childcare Support, and how to fund equipment and books.

Additional Learning Support (ALS)

Our ALS department offers students support with their studies. They also offer practical help and/or specialised resources to assist a range of disabilities such as physical or sensory, a learning difficulty or other health issues.

Learning Centres

Our Learning Centres will provide you with all the information you need for your studies and our experienced staff are here to help.

Student ID Cards

Each student who enrolls at our College is given a unique student ID card. By wearing this at all times whilst on campus, we help keep each other safe.

Be a part of it...

College Life

Get involved in a range of activities, meet new people and learn different skills outside the classroom.

Activities include the Student Union, competitions, trips, fundraising, campaigning and more.

Make your c.v. stand out from the crowd.

College Sport

A team of sports fanatics, with professional backgrounds in personal training and coaching will get you involved with a range of sports and fitness classes at the College. Activities include: basketball, volleyball, table tennis, kickboxing, futsal, badminton and lots more!

Mentoring

Are you interested in helping others? You could become a peer mentor with the support of College staff.

CHECK US OUT...

Our Opening Evenings give a real flavour of what to expect as a student at our College. Once you've seen our facilities and spoken to our staff and students you will want to tell all your friends!

OPEN EVENINGS

Acton Campus

Thursday 18 November 2010
Tuesday 15 February 2011
Tuesday 14 June 2011

Ealing Campus

Tuesday 12 October 2010
Tuesday 23 November 2010
Thursday 10 February 2011

Hammersmith Campus

Tuesday 19 October 2010
Tuesday 30 November 2010
Thursday 24 March 2011
Tuesday 7 June 2011

Southall Campus

Thursday 14 October 2010
Thursday 25 November 2010
Tuesday 8 March 2011

Acton Campus

Gunnersbury Lane, Acton
London W3 8UX

Ealing Campus

The Green, Ealing
London W5 5EW

Hammersmith Campus

Gliddon Road, Barons Court
London W14 9BL

Southall Campus

Beaconsfield Road, Southall
Middlesex UB1 1DP